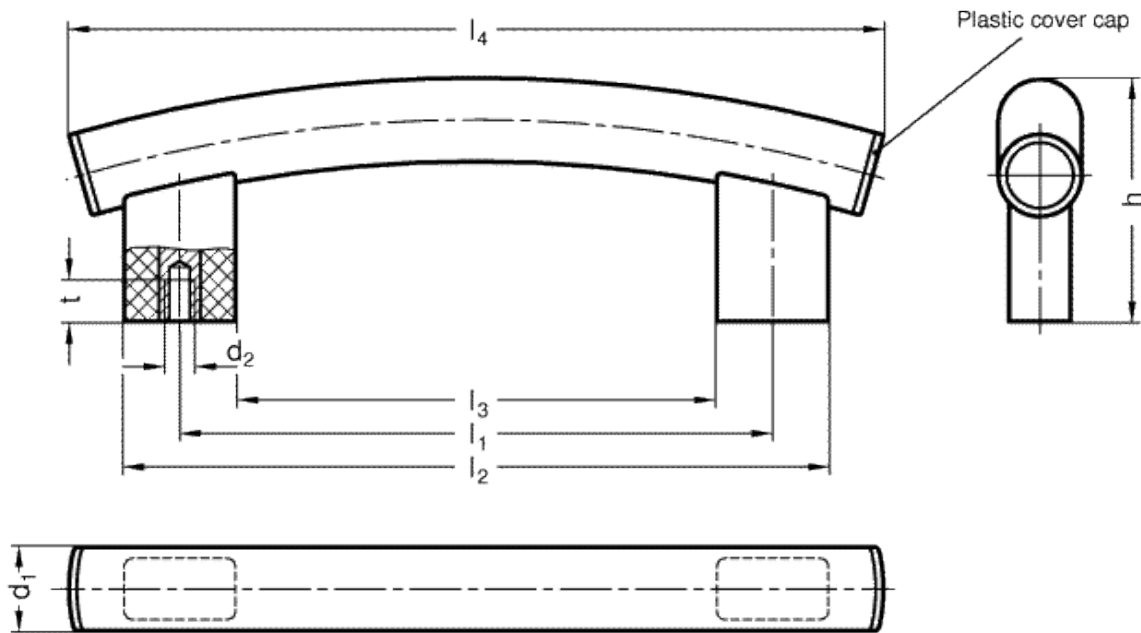


GN 666.4-NG

Arch-shaped handles



INOX
Stainless Steel



technical informations

Tube

AISI 304 stainless steel NG, ground matte shiny finish.
Highly resistant to wear, scratches and chemical agents

Handle shanks

Aluminium, RAL 9005 black colour, matte finish, epoxy resin coating.

Tube end caps

Glass-fibre reinforced polyamide based (PA) technopolymer, black colour, matte finish, temperature resistant up to 100 °C.

Assembly

Back mounting, zinc-plated steel threaded bushings.

Features and applications

With their curved type, GN 666.4 tubular arch handles highlight modern machine design.
The production method used allows special solutions to be realised, e. g. with other radii of curvature or other leg heights.

Standard Elements	Main dimensions							Mounting holes		Weight
Description	d ₁	l ₁	b	h	l ₂	l ₃	l ₄	d ₂	t _{min.}	g
GN 666.4-30-M6-400-NG	30	400	22	90	440	360	480	M6	15	650
GN 666.4-30-M8-400-NG	30	400	22	90	440	360	480	M8	15	660
GN 666.4-30-M6-500-NG	30	500	22	94	540	460	580	M6	15	780
GN 666.4-30-M8-500-NG	30	500	22	94	540	460	580	M8	15	618
GN 666.4-30-M6-600-NG	30	600	22	98	640	560	680	M6	15	775
GN 666.4-30-M8-600-NG	30	600	22	98	640	560	680	M8	15	850



STANDARD MACHINE ELEMENTS WORLDWIDE